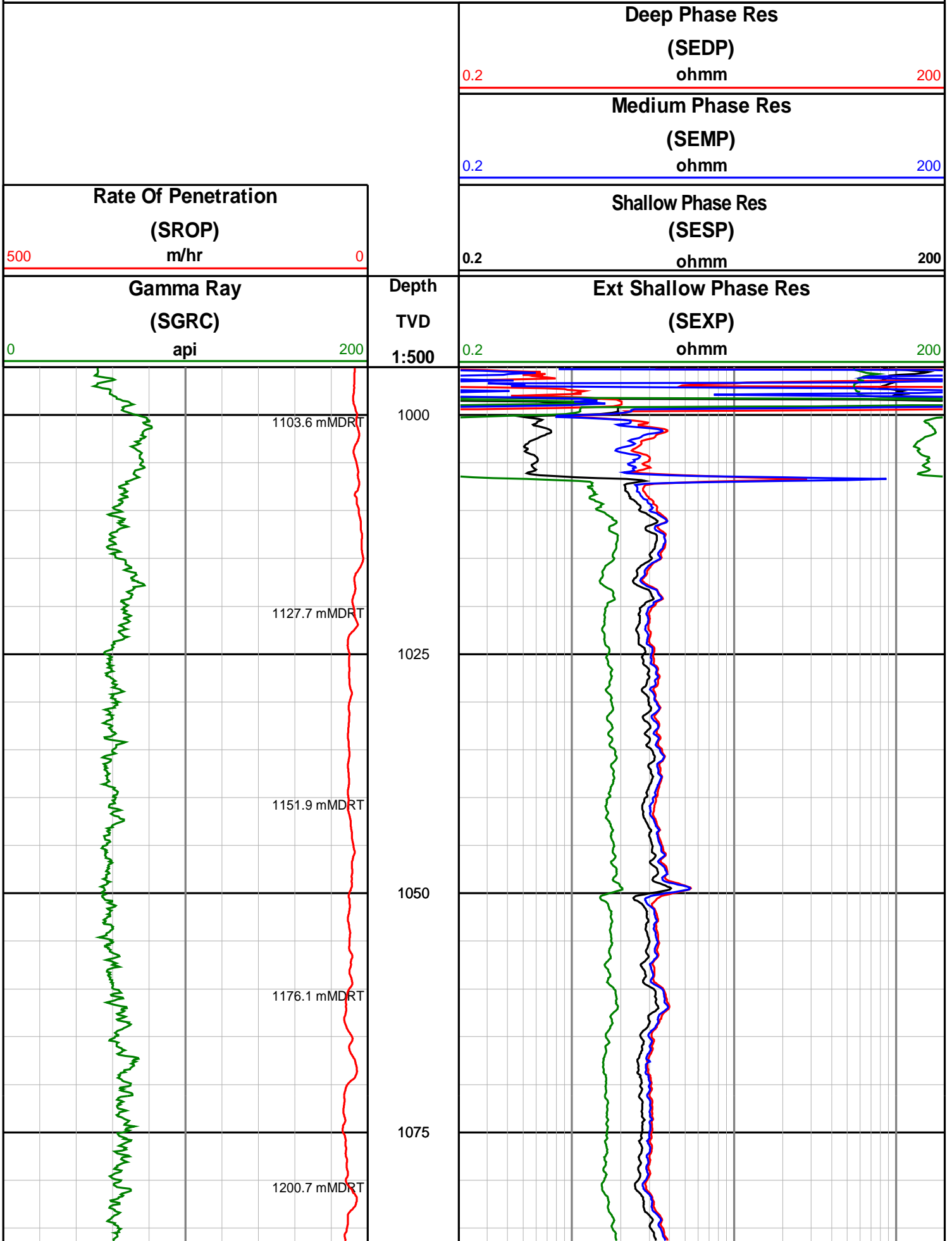
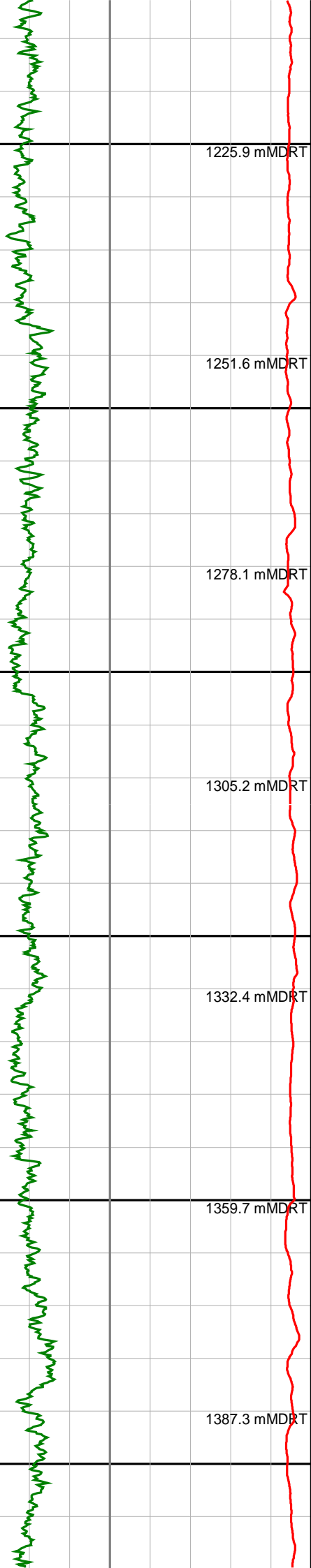


Anzon Australia Ltd

Basker-3

Recorded/Realtime LWD Log (Permanent Datum - LAT)





1100

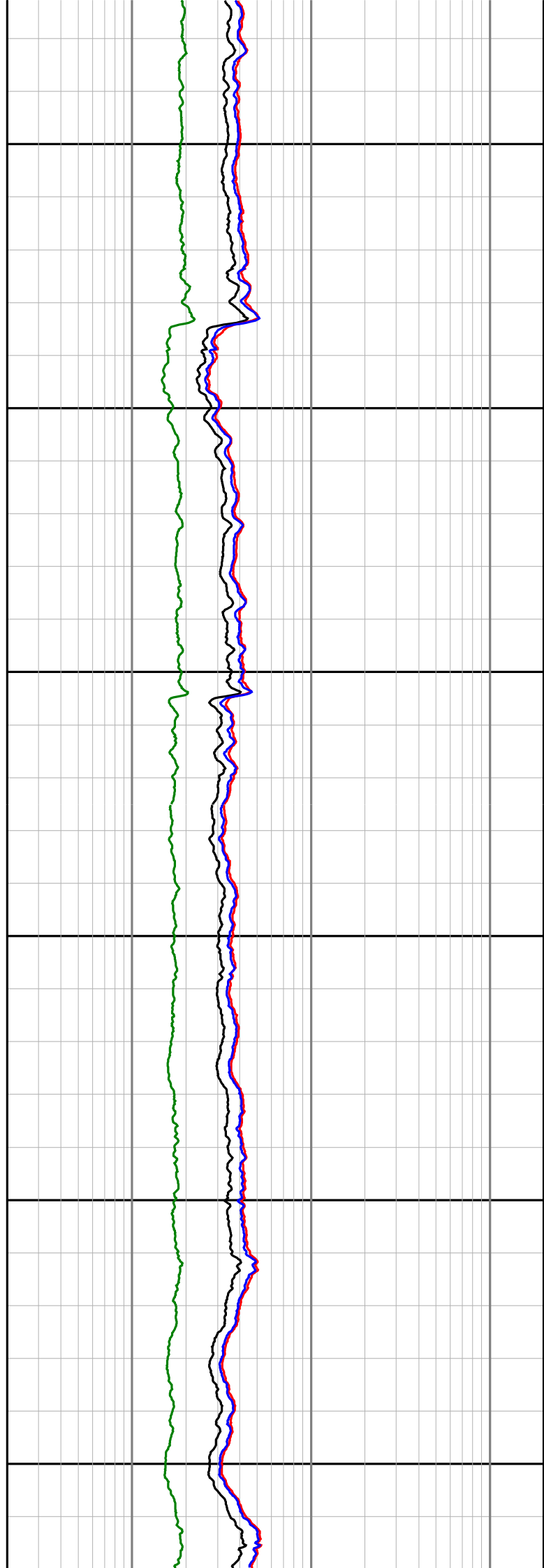
1125

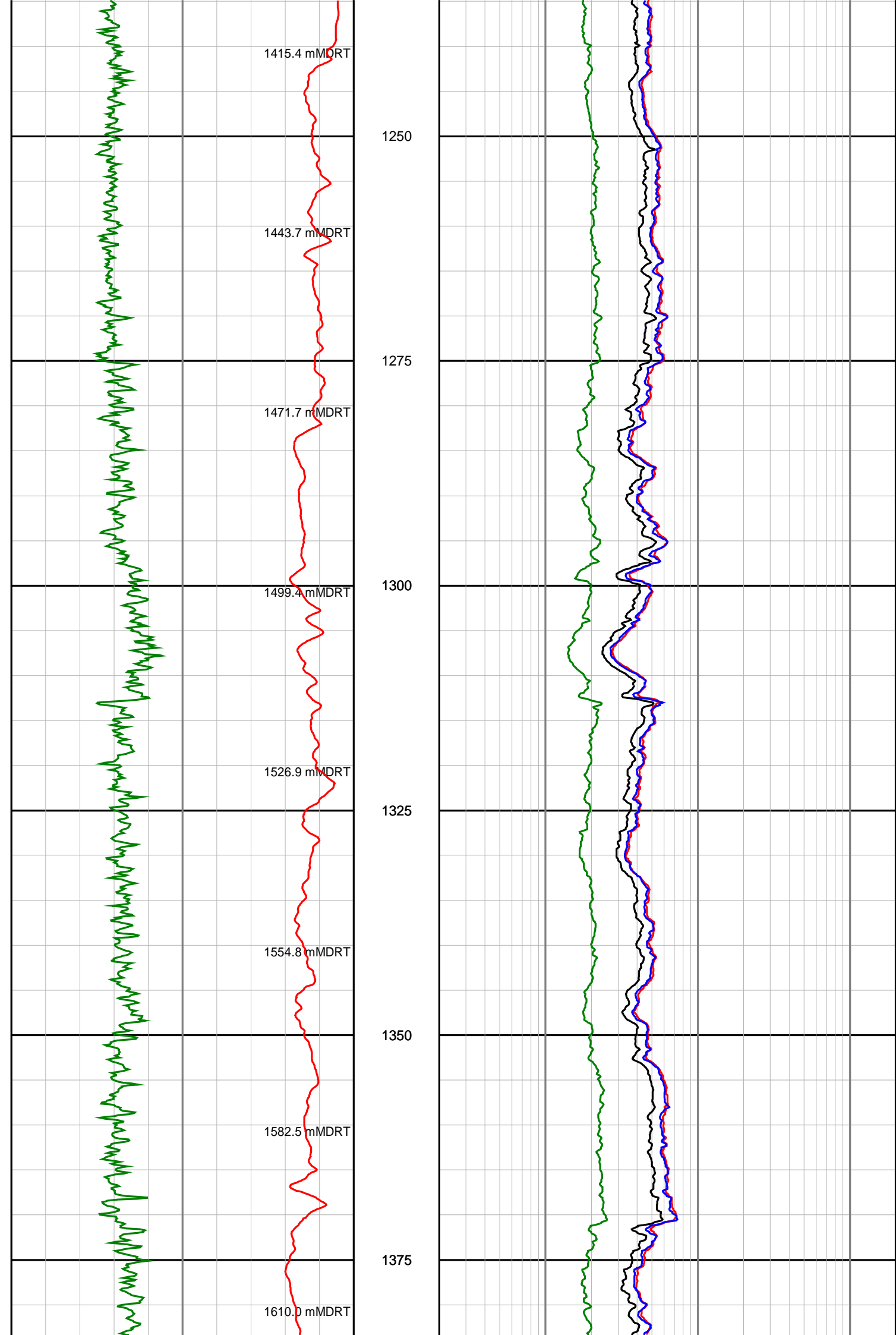
1150

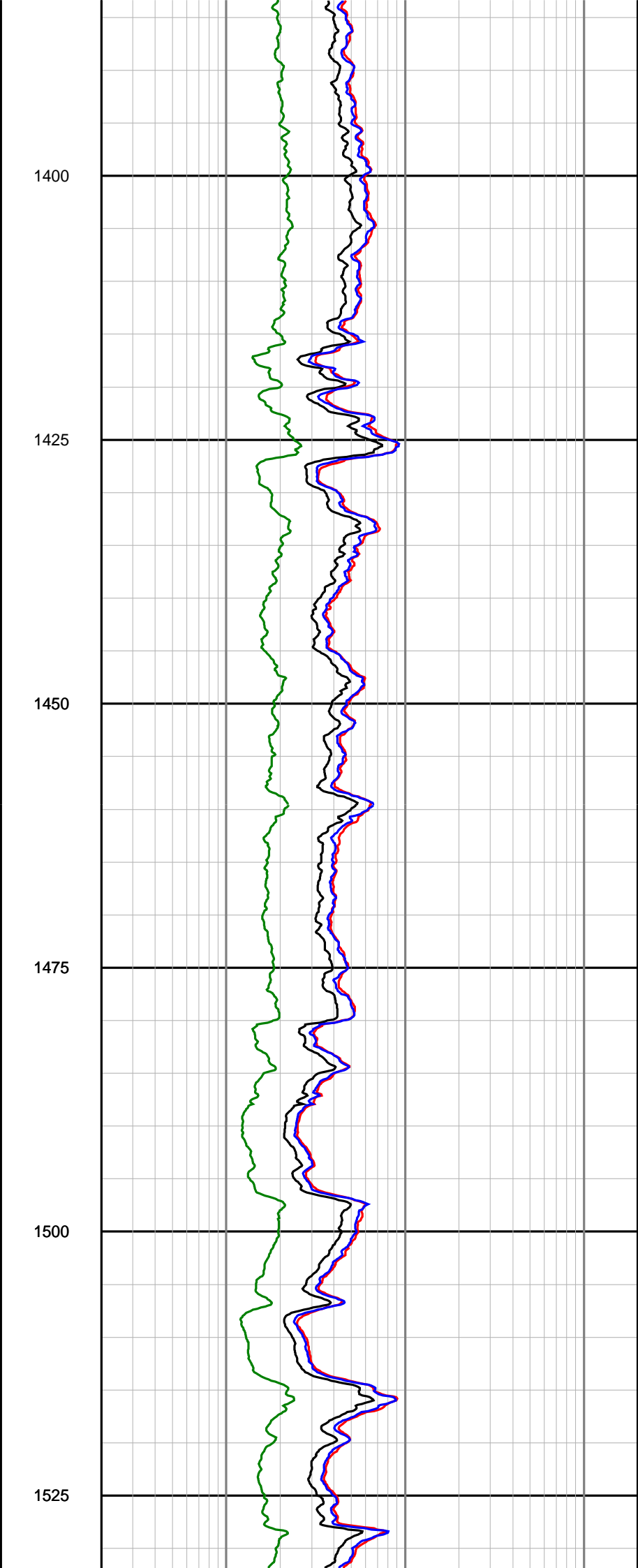
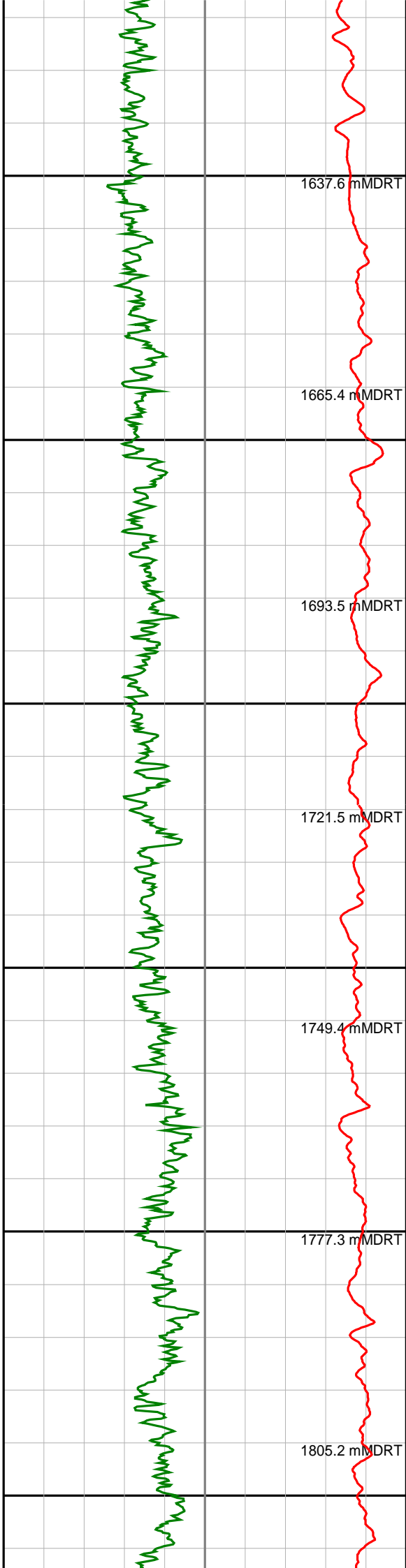
1175

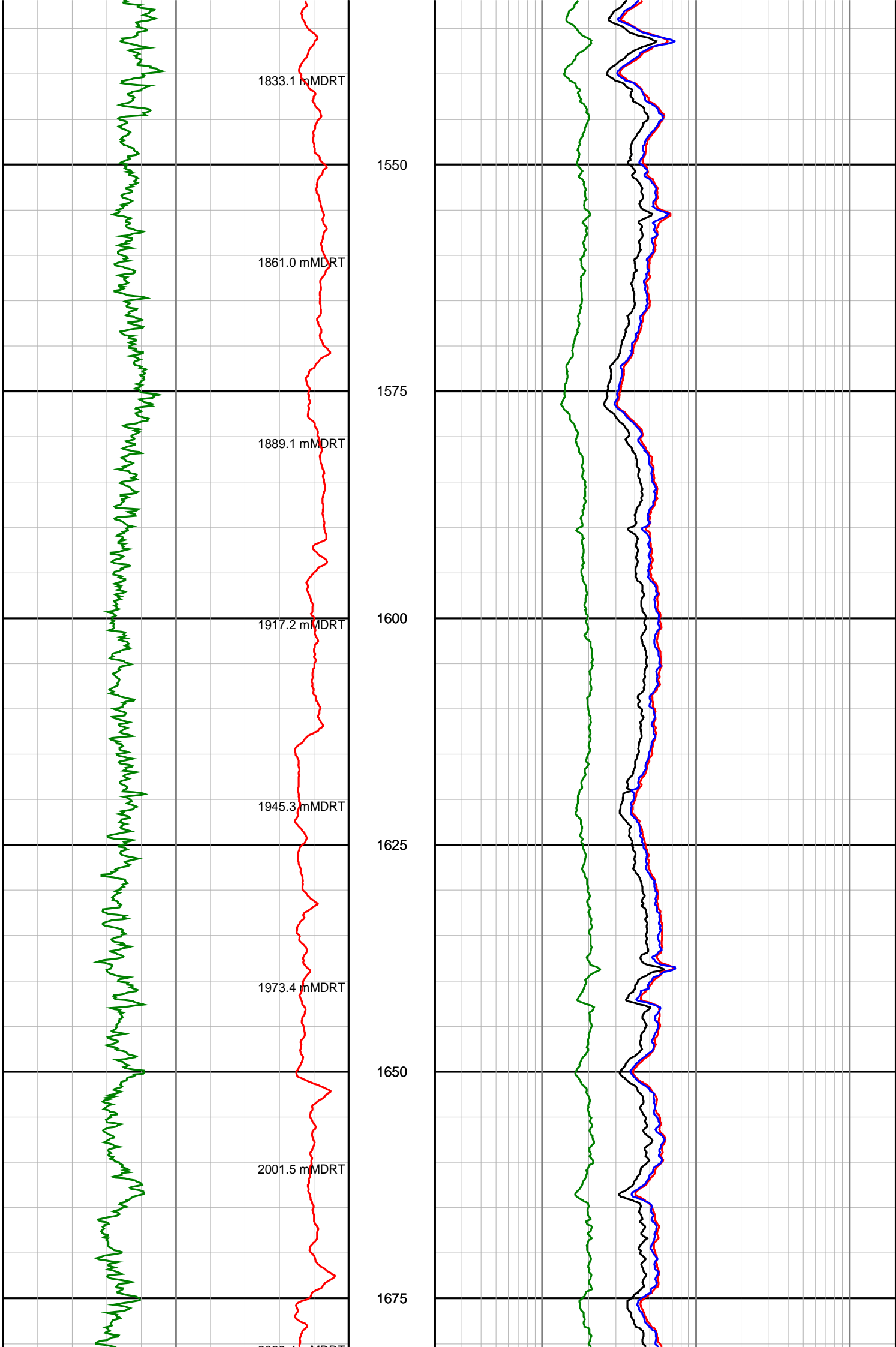
1200

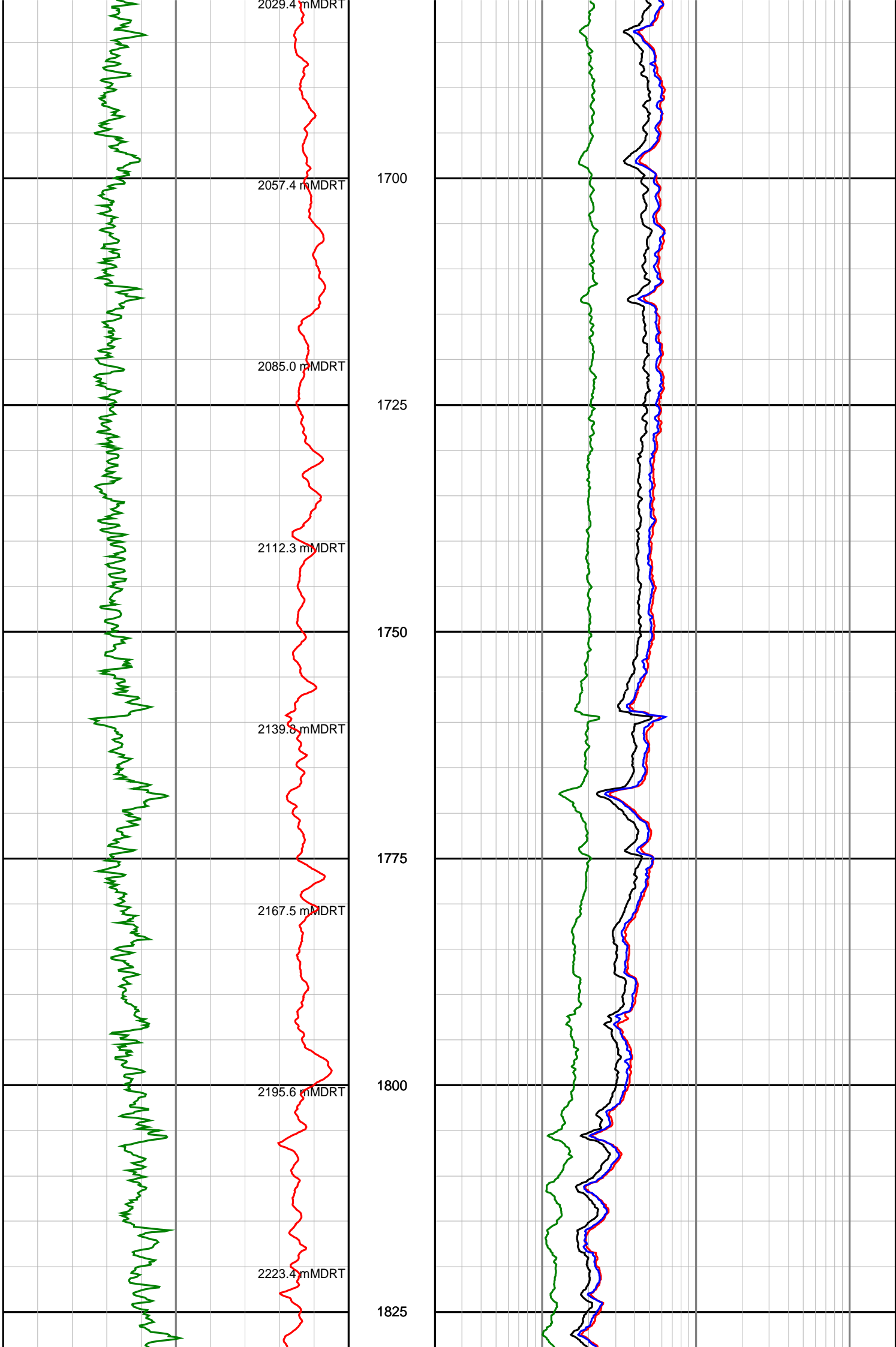
1225

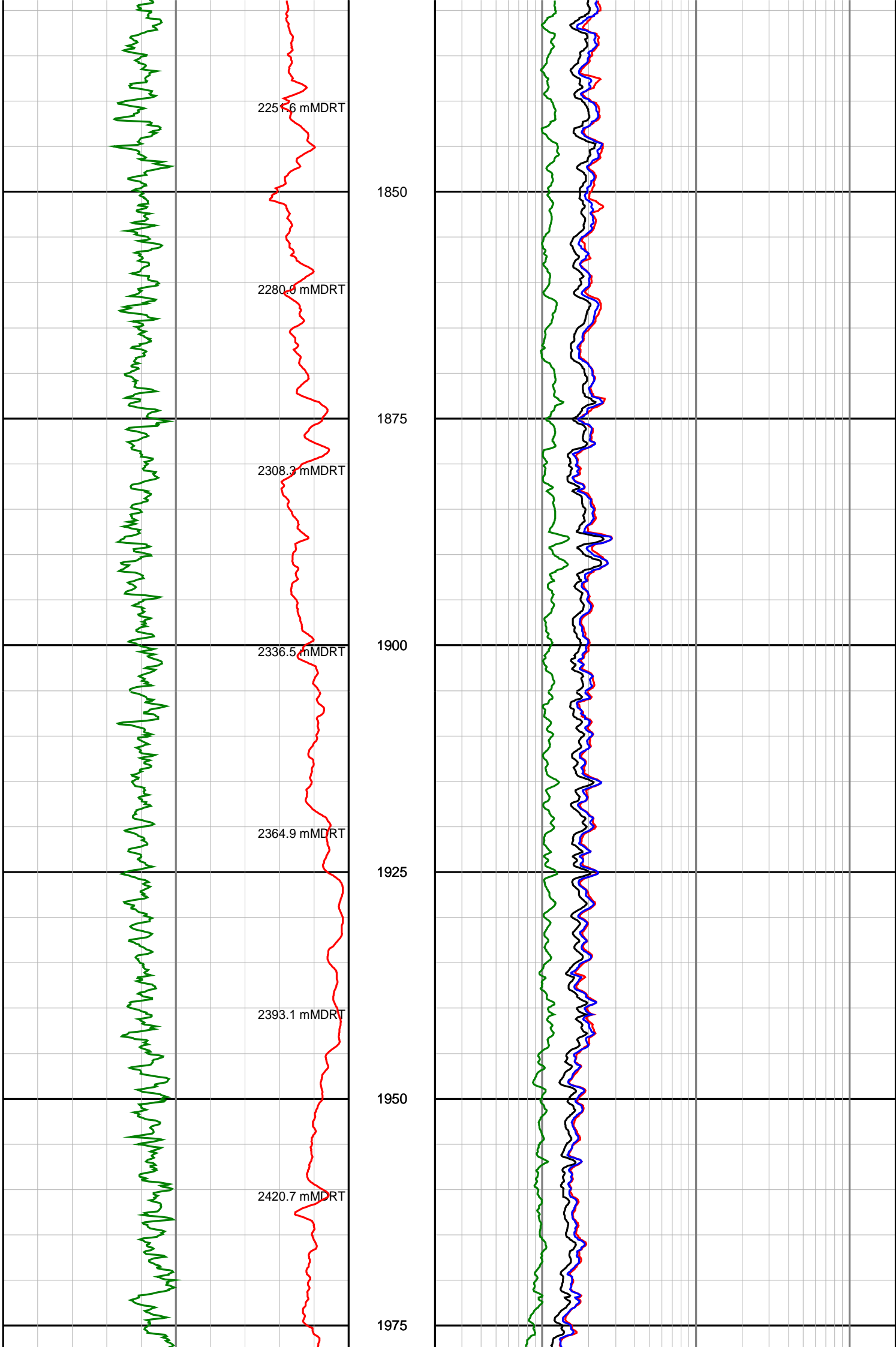


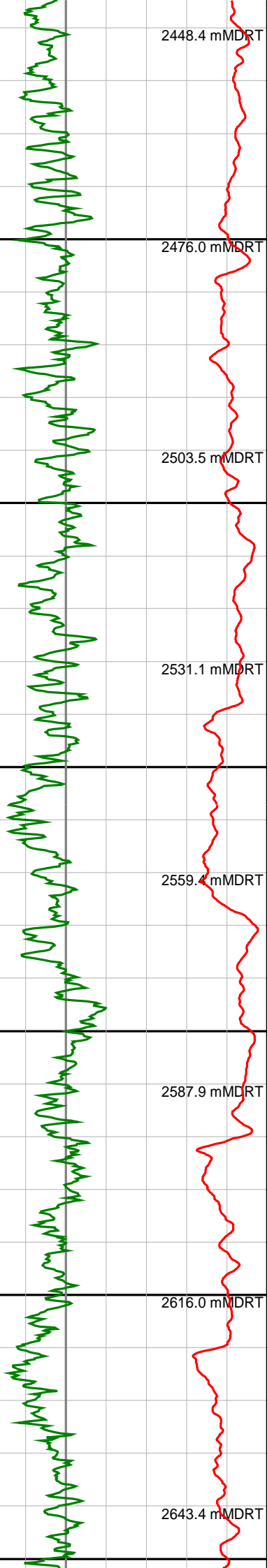












2000

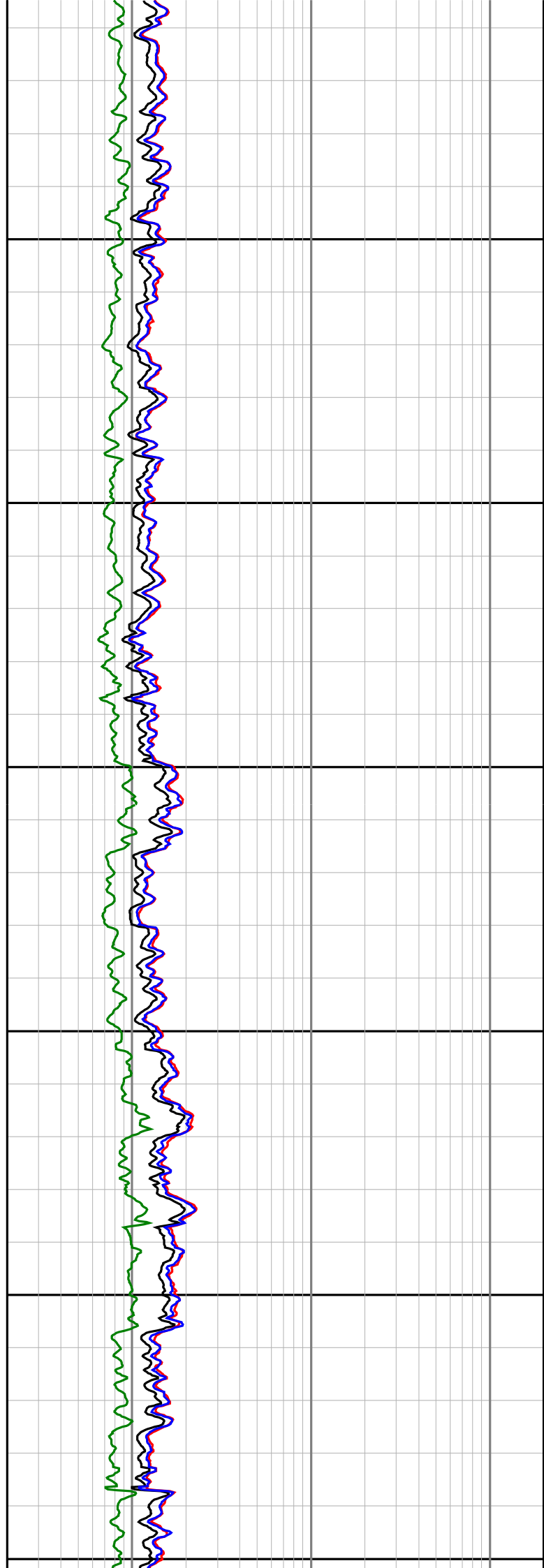
2025

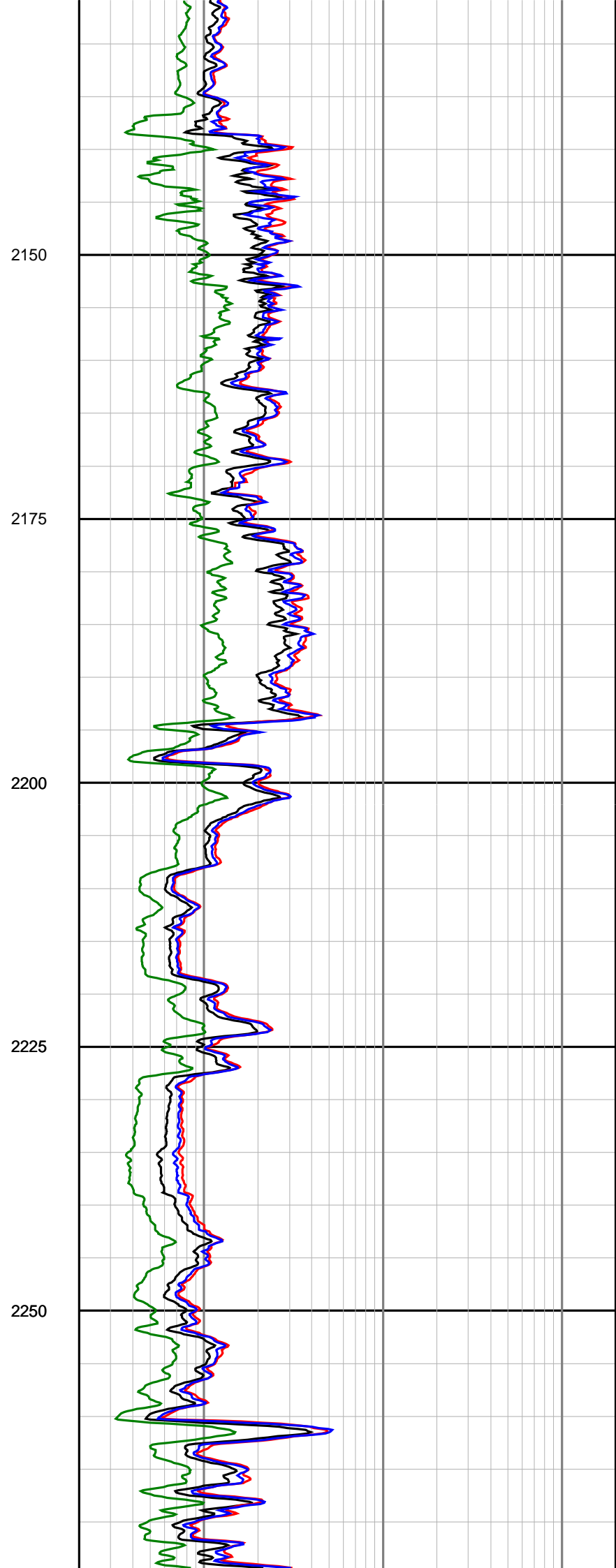
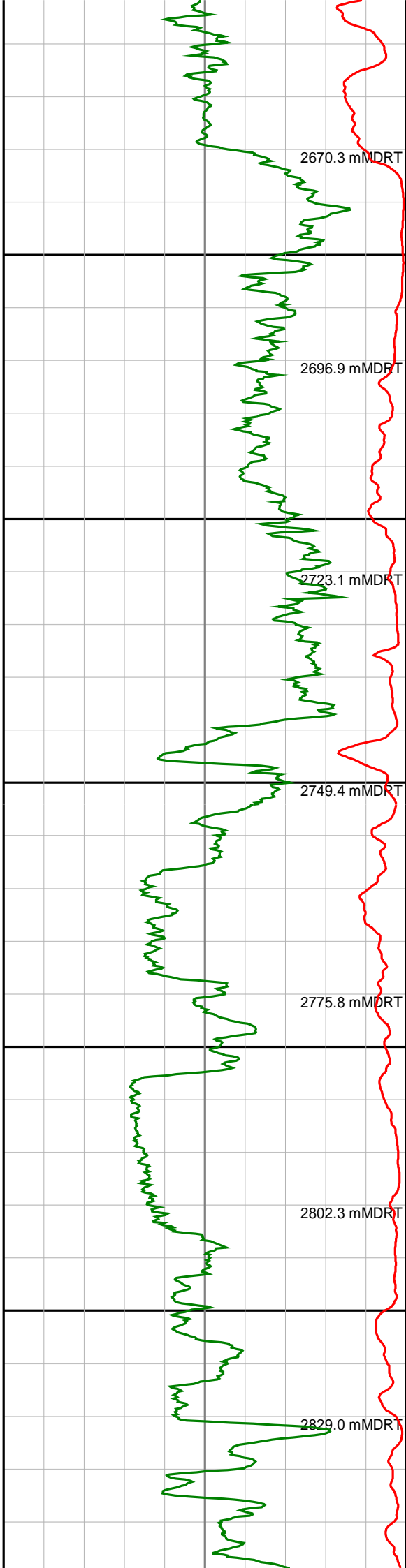
2050

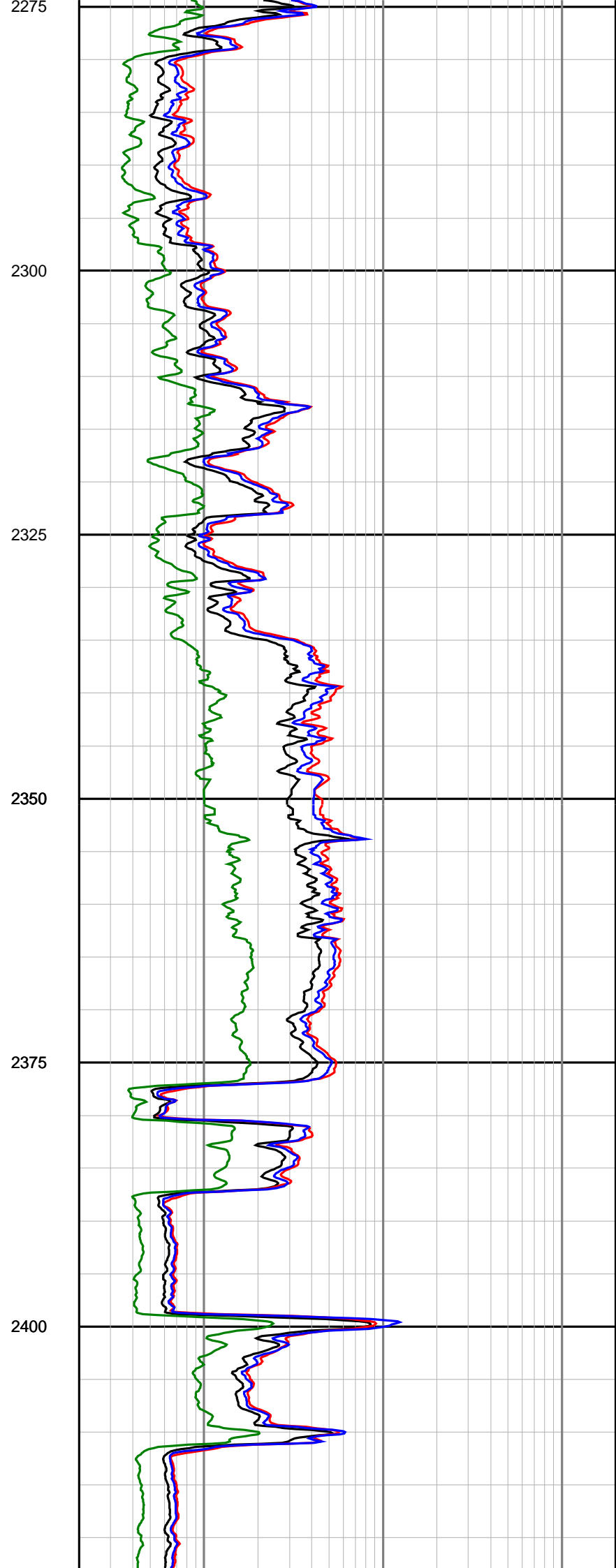
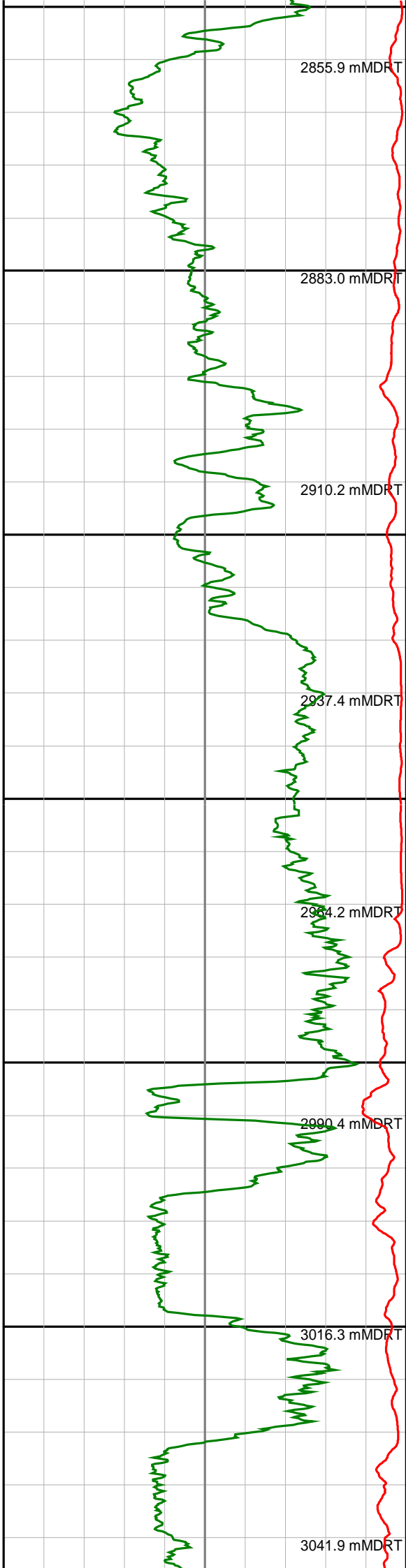
2075

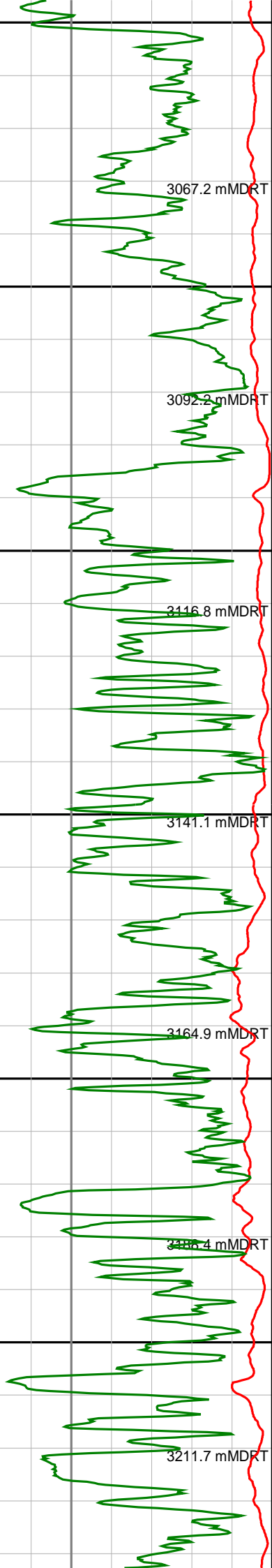
2100

2125









2425

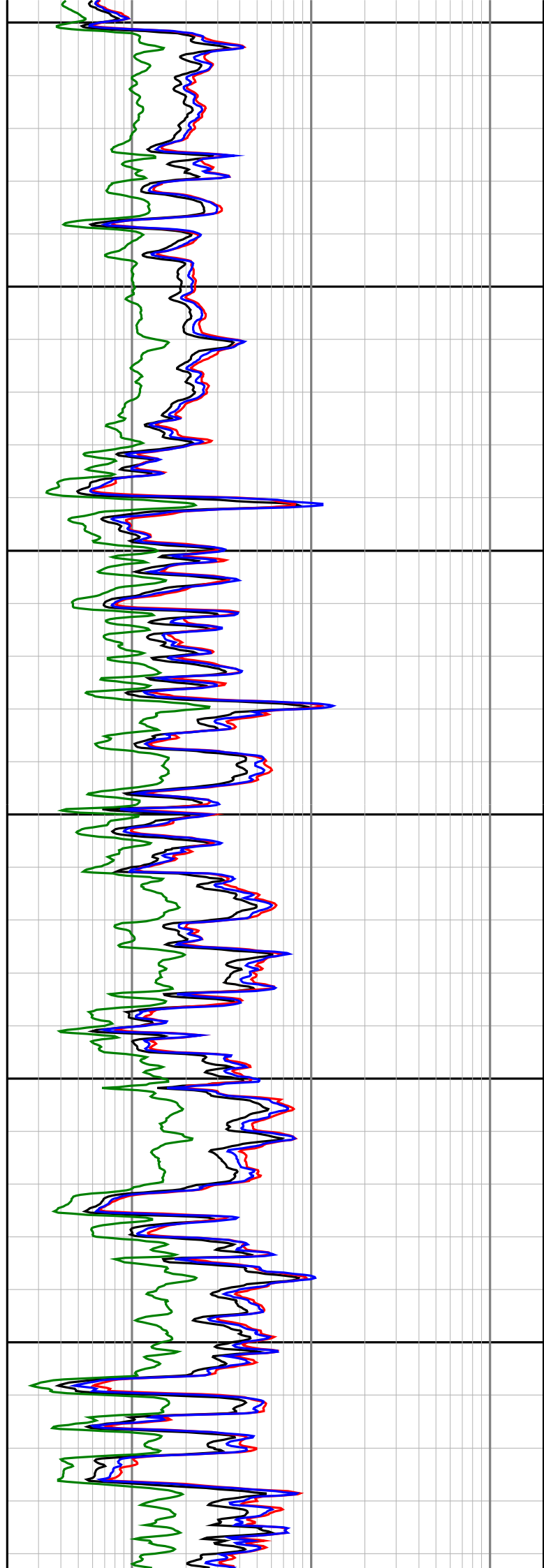
2450

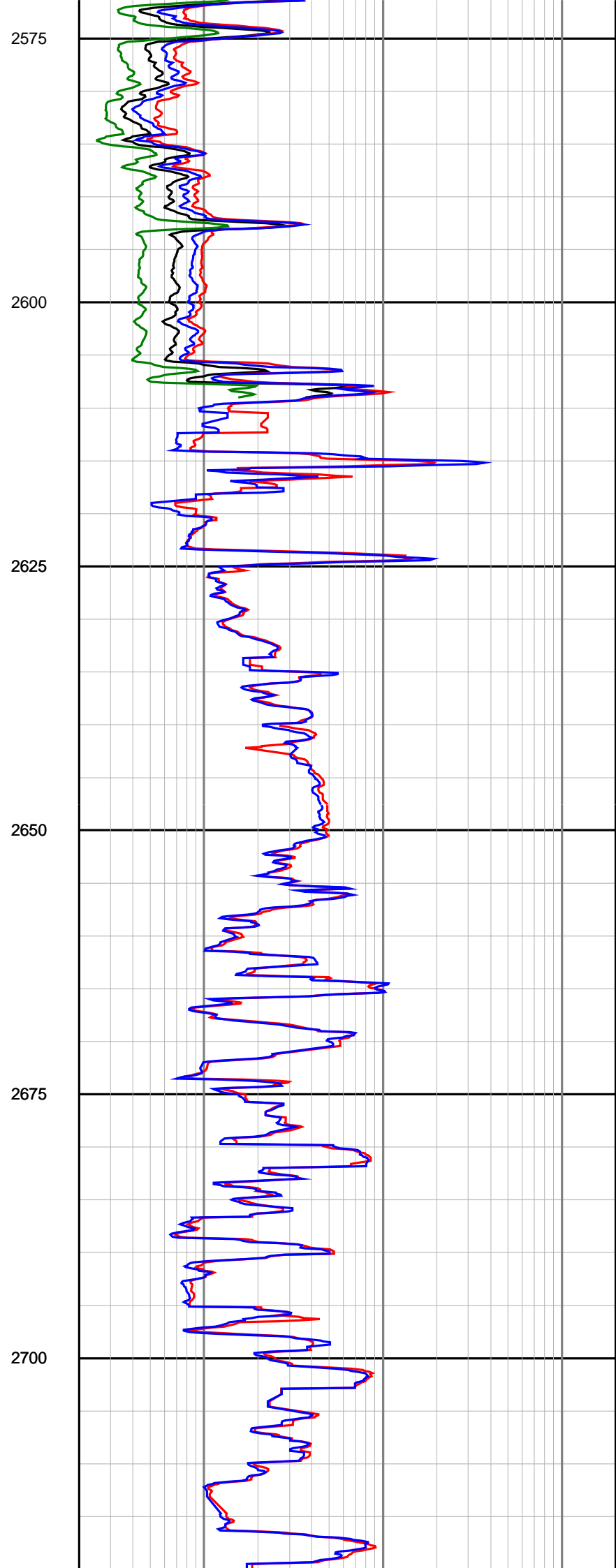
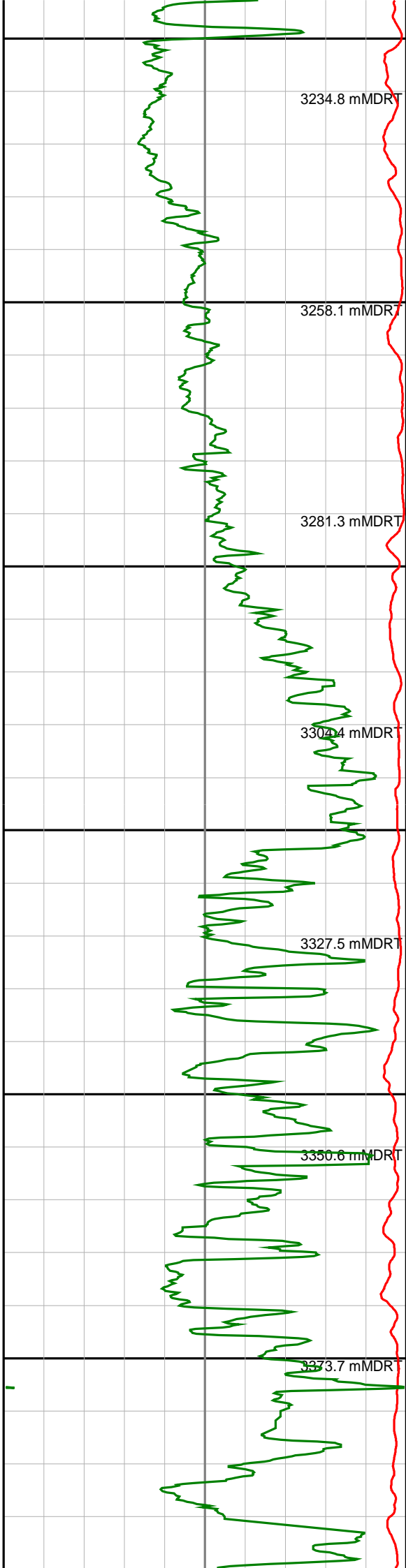
2475

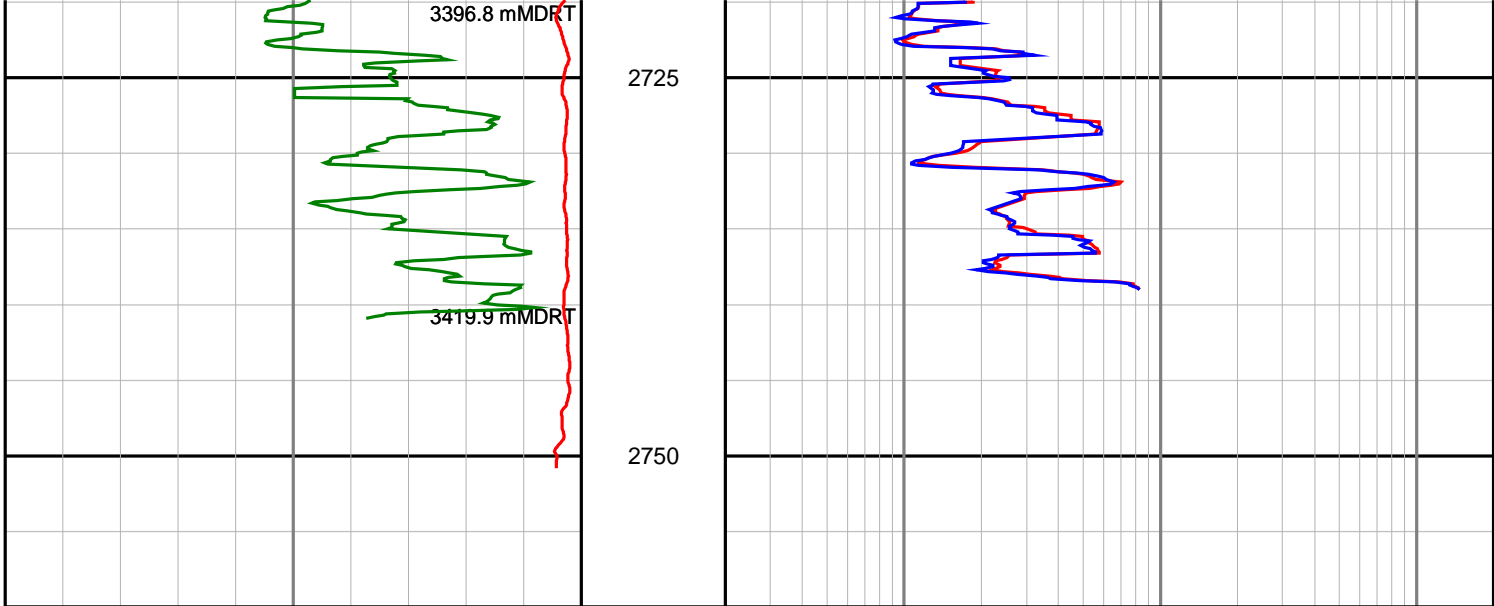
2500

2525

2550







<p style="text-align: center;">Gamma Ray (SGRC) api</p> <p style="text-align: left;">0</p> <p style="text-align: right;">200</p>	<p style="text-align: center;">Depth TVD 1:500</p>	<p style="text-align: center;">Ext Shallow Phase Res (SEXP) ohmm</p> <p style="text-align: left;">0.2</p> <p style="text-align: right;">200</p>
<p style="text-align: center;">Rate Of Penetration (SROP) m/hr</p> <p style="text-align: left;">500</p> <p style="text-align: right;">0</p>		<p style="text-align: center;">Shallow Phase Res (SESP) ohmm</p> <p style="text-align: left;">0.2</p> <p style="text-align: right;">200</p>
		<p style="text-align: center;">Medium Phase Res (SEMP) ohmm</p> <p style="text-align: left;">0.2</p> <p style="text-align: right;">200</p>
		<p style="text-align: center;">Deep Phase Res (SEDP) ohmm</p> <p style="text-align: left;">0.2</p> <p style="text-align: right;">200</p>